

z/VM – Platform Update

Frederik Hartmann

frederik.hartmann@de.ibm.com

z/VM Chief Product Owner

[linkedin.com/in/hartmann-frederik/](https://www.linkedin.com/in/hartmann-frederik/)



Agenda

- z/VM Releases and Cadence
- z/VM Linear Service
- z/VM 7.5 Overview
- z/VM Version 7 Release 4 Overview
- z/VM z17 Support
- Statements of Direction

- Development Focus
- Other Highlights and News

z/VM Releases and Cadence

z/VM Release Cycle Cadence

For illustrative purposes, not a commitment.

	2024				2025				2026				2027				2028				2029			
	1Q	2Q	3Q	4Q	1Q	2Q	3Q	4Q	1Q	2Q	3Q	4Q	1Q	2Q	3Q	4Q	1Q	2Q	3Q	4Q	1Q	2Q	3Q	4Q
7.3	R				R				R															
	N	N	SC	SC	SC	SC	SC	SC	WFM	SC	SC	SC	SC	EOS										
7.4					R				R				R				R							
					GA	SC	N	SC	N	SC	N	SC	SC	SC	SC	SC	SC	SC	SC	SC	SC	SC	SC	SC
7.5									R				R				R				R			
									GA	SC	N	SC	N	SC	N	SC	N	SC	N	SC	N	SC	N	SC

↑ Announced z/VM 7.3 EOS – April 30, 2027

1. GA 3rd Quarter of even years
2. In service ~ 4.5 years
3. New Function **every 6 months** until GA of next release, and then service, RSU, processor compatibility
4. Six RSUs for life of a release, One with GA, next 3 are every 6 months

Legend:
 GA: Generally Available
 N: New function APAR PTFs available
 SC: Service and processor compatibility
 R: RSU
 WFM: Withdrawn from Marketing
 EOS: End of Service

z/VM Releases

Release	ProdId	GA	EOM	EOS	Notes
z/VM 7.5	5741-A09	3Q2026	TBD	TBD	
z/VM 7.4	5741-A09	Sep 20, 2024	TBD	TBD	First release with linear service strategy
z/VM 7.3	5741-A09	Sept 16, 2022	Mar 2, 2026	Apr 30, 2027	
z/VM 7.2	5741-A09	Sept 18, 2020	Mar 4, 2024	Mar 31, 2025	

Release ²	IBM z17 & IBM LinuxONE Emperor 5	IBM z16 & IBM LinuxONE Emperor 4	IBM z15 & IBM LinuxONE III	IBM z14 & IBM LinuxONE II
z/VM 7.5	✓	✓		
z/VM 7.4	✓	✓	✓	
z/VM 7.3	✓	✓	✓	✓

1. z/VM GA every 2 years with in service for ~4.5 years.
2. Service may be required for support of various servers.

z/VM Website Migration

- The z/VM website has migrated to a new technology platform in February 2026
- Notifications are now fully integrated into IBM My Notifications and supports the following events:
 - Downloads and drivers
 - Product information and publications
 - Red Alerts
 - LifeCycle
 - Webcasts
 - News
- **Re-enrollment is required to receive notifications in the future!**

z/VM	Last updated: February 17, 2026
News	z/VM Web site notifications
About z/VM	The z/VM web page notification process will change starting in February 2026. We will no longer be providing a method to notify users of changes to <i>any</i> z/VM web page. Instead, our most important pages like Red Alerts, Change Logs, News, and upcoming New Function will use the IBM My Notification Subscription Service . This will allow us to provide insight to what has changed in the email text, provides a standardized IBM notification user experience, and ensures subscribers are only updated when a significant change has occurred.
Events calendar	
Products and features	
Downloads	My Notifications Instructions
Technical resources	To subscribe, please follow the instructions below: <ol style="list-style-type: none"> 1. Visit the IBM My Notifications - Product notifications page. 2. Make sure you're logged in with your IBMid. 3. In the Product lookup search field type "z/VM". Make sure to include the forward slash. 4. Several z/VM products will be displayed. In the dropdown box, click on the subscribe link for the category "z/VM". 5. Choose the Document Types you wish to receive email notifications. See the explanation below for which document types are mapped to the z/VM web pages. For example: If you would like to receive notifications when the z/VM New Function page is updated you would select the "News" document type. 6. If z/VM is already listed as a product you are subscribed to, or you wish to change your document types, click on the "Edit" link next to "z/VM".
Library	
How to buy	
Install	
Service	
Support	
Education	z/VM My Notifications Document Types
z/VM Change logs	The Product Types below are mapped to the listed z/VM web pages. If you wish to receive an email when an important update has occurred make sure you are subscribed to the corresponding document type. <ul style="list-style-type: none"> • Downloads and drivers <ul style="list-style-type: none"> • z/VM Downloads • Product information and publications: <ul style="list-style-type: none"> • z/VM Library (includes updates to the PDF listings)
Site map	
Notify me	
Contact z/VM	

z/VM Continuous Delivery Page

- Gives an overview of new function that is under consideration. Allows clients to:
 - Express interest in being a sponsor user for an item.
 - Plan for new support coming out in the future.
 - Understand the value, benefit, and impact of new enhancements.

- <https://www.ibm.com/support/pages/zvm/newfunction/>

z/VM

Last updated: 12 February 2024

z/VM New Function APARs | z/VM 6.4 Function | z/VM 7.1 Function | Suspended Projects | Continuous Delivery

Products & Solutions | Consulting & Services | Learn & Support | Explore more

z/VM Continuous Delivery News

Upcoming and available new function for z/VM 7.2 and 7.3.

Change Summary

- February 12, 2024: VM Pass-Through ESA Support is now available.
- January 26, 2024: Added Added Query SCPID

Introduction

Not all enhancements to z/VM are part of a new release or even a formal IBM announcement letter. This page is a resource to learn about enhancements going out through continuous delivery for z/VM. It's also different from formal announcements as it shows work in progress. Think of it as a living preview announcement for z/VM. As significant changes take place, this page will be updated. Check back often or [subscribe](#). Note: The z/VM Web site subscription service is intended to provide email alerts when specific z/VM pages are updated. If you are interested in receiving APAR updates, click the link for the individual APAR and subscribe to updates on that page.

We invite you to shape the future of z/VM by submitting and voting for ideas that matter most to you with the [IBM Z Hardware and Operating Systems Ideas Portal](#).

You may notice that some new functions are actively seeking sponsor users. If you are interested in becoming a sponsor user for a particular function, visit the [z/VM Sponsor User page](#) for more details. Also important, these and other ideas from customers and vendors are frequently discussed at the z/VM Council. For more information and details on how to join, please see the [z/VM Council web page](#).

+ Characteristics of a New Function APAR

New Function APARs

New function in progress	Target date	Last updated
Active Drain for PAGE Volumes	TBD	August 4, 2022
CPU Measurement Facility Host Sampler Exploitation	TBD	September 28, 2022
Digital Signature Verification of z/VM Service Packages	1Q 2024	November 17, 2023
Query SCPID	1Q 2024	January 26, 2024
REXX Sockets Enhancements	TBD	September 28, 2022

z/VM Continuous Enhancements

- Continuous Delivery means continuous improvements
- New function ideas come from many sources, including our clients
- The Ideas Portal is a great way to:
 - Submit the functionality you need
 - Vote on other suggestions
 - Get latest status on what our team is considering.
- Visit the Ideas Portal today:
<https://ibm.biz/zvmIdeas>

The screenshot shows the z/VM Ideas Portal interface. At the top, it says 'z/VM' on the left, 'Sort by: Trending' and 'Filter by: Status' on the right, and 'Showing 372 of 3277' at the bottom right. There are four suggestions listed, each with a 'VOTE' button on the left, a title, a description, and a status label at the bottom.

Rank	Title	Description	Status
1	Create new class B command to refresh stored DASD info without VARY OFF/ON the device	At present, for CP to see updated DASD info (like VOLSER, VTOC, etc), a device must be varied off/on to refresh the data. If the disk has been relabeled by a guest using full-pack minidisk, then the guest sees different information than a user wit...	Submitted
7	As z/VM RACF is not sharing with z/OS anymore we need a z/VM face on RACF, remove irrelevant CLASSES	As z/VM RACF is not sharing with z/OS anymore we need a z/VM face on RACF, remove irrelevant CLASSES. IBM no longer permits the sharing of RACF DB's with z/OS and z/VM. So why have irrelevant RACF classes visible in z/VM? It is confusing when scan...	Future consideration
7	Remove all references to JES on output of RACF commands on z/VM	I consider this an incorrout defect. My idea is to remove any references to JES and additional z/OS references that have no bearing on the z/VM product. It is distracting and confusing to me a VM sysprog. As RACF is pulling apart on z/VM from the ...	Future consideration
7	DIRMAINT EXTENT CONTROL statements need to check with RACFVM for authorization with SECLABEL Mandatory Access Control	We require DIRMAINT to respect RACF SECLABELS for DASD devices when working with MDISKs. Our directory and storage management is provided through DIRMAINT. DIRMAINT's EXTENT CONTROL is the single source of storage definitions. We need to have DIRM...	Not under consideration

z/VM Changelog

- All released feature and fix packs for z/VM 7.4 and later are published on the z/VM change log
- <https://www.ibm.com/support/pages/zvm/changelog/index.html>
- The service level allows for a clear identification of all installed and active service.

Last Updated: 13 February 2026

Service and feature packs released for the z/VM 7.4 CP component

z/VM 7.4 introduced [linear service](#) to the product. Service fix packs and feature packs are now released on a regular cadence. By installing the latest pack you will receive all service fixes and features for the component. Refer to the change log table below for a comprehensive list of changes to the component since the z/VM 7.4 General Availability date.

[Subscribe](#) to this page to receive email updates when this page has been changed.

Filter:

Release	Level	Available	Type	Crit PE	Security	HIPER	APAR	PTF	Details
7.4	0304	February 13, 2026	Fix pack	No	No	Yes	VM66912	UM90586	z/VM 7.4 CP Fix Pack - Feature 03 Fix 04 - Hide information <ul style="list-style-type: none"> • List-directed IPL causes DEV keyword to be missing from INDICATE USER List directed IPL processing has been updated to turn on a bit signifying IPL from a device. This bit is later used by INDICATE USER to output the DEV keyword in the command response. • Incorrect count of shared APVIRT crypto resources via the SYSTEM CONFIG statement The fix skips incrementing the shared crypto resource count if the resource is already included in the shared pool. • PEVM66887 HCP1010W Loaded when IPLing with SYSG Console HCPARM has been changed to correctly set the bits to indicate that the CONS=SYSG IPL parameter was found and this change fixes the HCP1010W wait state problem.
7.4	0303	December 18, 2025	Fix pack	No	No	No	VM66907	UM90575	z/VM 7.4 CP Fix Pack - Feature 03 Fix 03 + More information
7.4	0302	December 3, 2025	Hot fix	No	Yes	No	VM66903	UM90572	z/VM 7.4 CP Security APAR - Feature 03 Fix 02
7.4	0301	November 25, 2025	Fix pack	No	No	No	VM66887	UM90571	z/VM 7.4 CP Fix Pack - Feature 03 Fix 01 + More information
7.4	0300	October 3, 2025	Feature pack	No	No	No	VM66877	UM90555	z/VM 7.4 CP Feature Pack - Feature 03 Fix 00 + More information
7.4	0203	September 4, 2025	Fix pack	No	No	Yes	VM66871	UM90552	z/VM 7.4 CP Fix Pack - Feature 02 Fix 03 + More information
7.4	0202	August 20, 2025	Fix pack	No	No	Yes	VM66866	UM90549	z/VM 7.4 CP Fix Pack - Feature 02 Fix 02 + More information

z/VM RSUs

- The RSUs and service levels are published on the z/VM RSU page
- <https://www.ibm.com/support/pages/zvm/changelog/740/rsu.html>
- Recommended Service Upgrades (RSUs) are now created before a new z/VM feature pack is introduced to the product.

z/VM RSU7404 - March 24, 2026

Component	Level	Notes
CP	<u>0307</u>	z/VM 7.4 CP Fix Pack - Feature 03 Fix 07
CMS	<u>0500</u>	z/VM 7.4 CMS Feature Pack - Feature 05 Fix 00
TCPIP	<u>0202</u>	z/VM 7.4 TCPIP Fix Pack - Feature 02 Fix 02
DIRM	<u>0102</u>	z/VM 7.4 DirMaint Fix Pack - Feature 01 Fix 02
RACF	<u>0201</u>	z/VM 7.4 RACF Fix Pack - Feature 02 Fix 01
VMSES	<u>0101</u>	z/VM 7.4 VMSES Fix Pack - Feature 01 Fix 01
DVF	<u>0100</u>	z/VM 7.4 DVF Feature Pack - Feature 01 Fix 00
Perfkit	<u>0101</u>	z/VM 7.4 Performance Toolit: Hardware Support - Feature 01 Fix 00
ICKDSF	<u>2301</u>	ICKDSF017
LE	<u>2301</u>	LE is 730

New to z/VM?

- Welcome new people to the z/VM Community

- Some resources beyond this presentation:
 - The z/VM 7.4 Library Page <https://www.ibm.com/support/pages/zvm/library/740pdfs.html>
 - The z/VM Presentations Page <https://www.ibm.com/support/pages/zvm/library/presentations/index.html>
 - The z/VM Ideas Portal <https://ibm.biz/zvmIdeas>
 - The IBMVM Mailing List, see https://www.ibm.com/support/pages/zvm/techinfo/listserv.html#Section_0.1 for details on subscribing.
 - The z/VM related events calendar <https://www.ibm.com/support/pages/zvm/events/>
 - z/VM Education Overview and Roadmaps <https://www.ibm.com/support/pages/zvm/education/>
 - z/VM Playlist on YouTube <https://ibm.biz/zvmhowto-yt>
 - The VM Workshop
 - Webpage - <http://www.vmworkshop.org/>
 - YouTube Channel - <https://ibm.biz/vmworkshopyoutube>

z/VM Linear Service

How does z/VM deliver service in 7.3 and prior?

- z/VM ships all service as APARs
 - Corrective Service APARs
 - New Function APARs
- Recommended Service Upgrade are released regularly containing a selection of APARs with pre-applied PTFs for the core z/VM components (CP, RACF, TCPIP, ...)
- Corrective Service APARs contain the fix for a single issue and only has the minimum pre-requisites such as file intersections or logical pre-requisites
- Challenges with the legacy service process
 - Time consuming and challenging process of selecting service to be applied
 - Problematic to compare service levels of z/VM Systems or check if a system is current on service
 - Huge new function APARs create extensive APAR drag, leading to an “Illusion of Choice”
 - Huge number of valid configurations, creating service and validation challenges

What is linear service?

- z/VM will continue to ship all service as APARs
 - Hot fix APAR
 - Fix pack APAR
 - Feature pack APAR
 - Hardware support APAR
- All APARs will have a pre-requisite against the APAR that was released last in its component
- A **hot fix APAR** will contain a critical fix or a security issue that must be released immediately due to its critical nature or the severity of the security exposure
- **Fix pack APARs** will be released on a regular cadence, containing all available fixes since the last released Fix Pack
- **Feature pack APARs** will be released every 6 months, containing new features
- **Hardware support APARs** will be released in support of new hardware and provide the necessary hardware toleration or exploitation
- **Recommended Service Upgrades (RSUs)** will be released shortly before a feature pack and will contain all available APARs pre-applied for the core components

z/VM Service Level Identifier

- With z/VM 7.4, the four-digit z/VM component SERVICE LEVEL identifier will increment depending on the service that is installed.
- GA components will have the service level set to 0000.
- Hot fix and fix pack APARs will increment the last digit by one (0001).
- Feature packs and hardware support APARs will increment the second digit by one and reset the fourth digit to zero (0100).
- Service levels of components will be independent of each other (CP: 0302 vs. Rexx: 0001).
- CP and CMS Service Levels can be validated by commands Q CPLEVEL and Q CMSLEVEL respectively.

Comp	Type	Service Level
CP	GA (Sep)	0000
CP	Fix pack (Sep)	0001
CP	Fix pack (Oct)	0002
CMS	Fix pack (Oct)	0001
CP	HW FP (Nov)	0100
TCPIP	Fix pack (Nov)	0001
CP	Feature pack (Jan)	0200
CP	Fix pack (Apr)	0201
CMS	Fix pack (Apr)	0002
CP	Hot fix (Apr)	0202
CP	Fix pack (Jun)	0203
CP	Feature pack (Aug)	0300

***Fixes and feature timeline is a hypothetical example to show Service Level flow only.**

Different APAR Types

Future Type	Rough Equivalent	Cadence	Description
Hot fix APAR	Corrective service APAR	When necessary	Fix for critical issue requiring an immediate solution
Fix pack APAR	Corrective service APAR	Every 4 weeks	Bundle of fixes for regular issues with in-depth validation
Security APAR	Corrective service APAR	When necessary	Security APAR with further information available at the Security Portal
Feature pack APAR	New function APAR	Every 6 months	Bundle of new features
Hardware support APAR	New function APAR	When necessary	Support for new or updated hardware, limited to hardware toleration on stable release when possible.

What does this mean for you?

- Selecting applicable service will get significantly easier in the future
- Validating that all systems receive the same service will be simplified
- You will always run a service configuration that received extensive testing from IBM
- z/VM Development intends to improve the service experience with future Feature Packs
- However: You will no longer be able to select a single fix without having to apply other service

Available service paths in the future

- Manage and control the amount of service that must be applied by following one of these paths

Service Path	Conservatism	Features	Description
Stay on the oldest release in service	High	Delayed by up two years	No feature packs must be applied to receive corrective service
Latest RSU of current release	Medium	Delayed by 6 months	Stay on the latest RSU and adopt new features only after a delay of 6 months after availability
Latest released APAR	Low	As soon as available	Apply service and features as soon as available, recommended for development or test systems

z/VM 7.5 Overview

z/VM 7.5 – At a Glance

- Preview announce February 17, 2026
- Announce August TBD
 - General Availability – TBD
- Architecture Level Set of IBM z16 and IBM LinuxONE IV or newer processor families
- Will follow the Linear Service Model introduced with 7.4
- New function delivered in the z/VM 7.4 service stream using the Continuous Delivery model, including:
 - TRSOURCE IO 5-Digit Device Support
 - Two-Speed Monitoring
 - EQDIO vNIC Simulation
 - EQDIO Multi-VSWITCH Link Aggregation
 - Move CMMA Reset Off Master Processor
 - Soft Abend Improvements
 - Fast LOGOFF Control

z/VM Version 7 Release 4 Overview

z/VM 7.4 – At a Glance

- Preview announce February 6, 2024
- Announce August 6, 2024
 - General Availability – September 20, 2024
 - <https://www.ibm.com/docs/announcements/AD24-0662/AD24-0662>
- Architecture Level Set of IBM z15 and IBM LinuxONE III or newer processor families
- New service strategy implementing a Linear Service Model
 - z/VM Component Change Logs – <https://www.ibm.com/support/pages/zvm/changelog/>
- New function delivered in the z/VM 7.3 service stream using the Continuous Delivery model, including:
 - z/VM Performance Data Pump
 - Reduced guest logoff time
 - Support for 2TB guest memory
 - Secure guest IPL
 - New security compliance interface
 - Digital Signature Verification of service
 - Ease-of-use enhancements for z/VM system programmers

z/VM 7.4 – Removal of Obsolete Crypto Support

- Removal of support for obsolete crypto operands in the user directory
 - **CRYPTO** operand on the **CPU** statement
 - **CSU**, **KEYENTRY**, **MODIFY**, and **SPECIAL** operands on the **CRYPTO** statement

- Above must be removed from the directory prior to:
 - Running the z/VM 7.4 DIRECTXA MODULE
 - IPLing z/VM 7.4
 - Any DirMaint directory updates

- **CRYPTO** and **NOCRYPTO** operands are not allowed with **CPU** operation of Diagnose x'84'

z/VM 7.4 – Packaging Changes

- DVD-R is no longer a supported System Image distribution media (satisfies Statement of Direction)
- **TCPIP** user directory entry will IPL 990 (ZCMS)
- Removal of option to use the default password during installation
- Installation support for **DATAPUMP** user ID
- Integration of HCD into CP base
- Hash value is added to DVDIMAGE file for each file on each DVD/ZIP
- Installation password for **DIRMAINT** userid is changed from AUTOONLY to LOGONBY
- Removal of the RLDSAVE option from the \$PPF file used to build the CPLOAD MODULE

z/VM 7.4 – EREP Removal

- EREP has announced
 - Withdrawal from Marketing **May 6, 2024**
 - End of Service **February 28, 2025**

- EREP product executables are bundled in z/VM 7.3
 - Executables will no longer be available in z/VM 7.4

- RECORDING function defaults will likely change in z/VM 7.4

Statements of Direction

z/VM 7.4 – Statement of Direction

Removal of support for the LDAP Server

- z/VM V7.4 is planned to be the last z/VM release to support the z/VM LDAP server. This server, a re-host of the z/OS Directory Server, will be removed from z/VM TCP/IP in a future release.
- This includes the LDAPSRV virtual machine and associated components.
- All future releases will continue to support ldap-bind as an authentication factor through the IBM Z Multi-Factor Authentication program (5655-MA1).
- CMS-based LDAP client utilities, and the RACF r_admin interface, are not affected by this statement.

z/VM 7.4 – Statement of Direction

Removal of NFS support

- z/VM V7.4 is planned to be the last z/VM release to provide NFS client and server support. NFS client and server support will be removed from z/VM TCP/IP in a future release.

z/VM 7.4 – Statement of Direction

z/CMS as the default CMS

- z/VM 7.4 is planned to be the last z/VM release to have ESA/390 CMS as the default.
- A future z/VM release will use z/CMS, renamed "CMS", as the default.
- ESA/390 CMS, renamed "CMS390", is planned to remain available for guests that are dependent on ESA/390 or 370 accommodation.

z/VM 7.4 – Statement of Direction

Security evaluation of z/VM 7.4

- IBM intends to pursue evaluations in anticipation of certification of z/VM 7.4 to the Common Criteria standard for IT security (ISO/IEC 15408) as described here.
- The Target of Evaluation, z/VM V7.4, including the Single System Image function and the RACF Security Server feature, will focus on conformance both to the National Information Assurance Partnership (NIAP) Virtualization Protection Profile (VPP) with Server Virtualization Extended Package, including labeled security, and to the Operating System Protection Profile (OSPP) at Evaluation Assurance Level (EAL) 4+.

z/VM 7.4 – Statement of Direction

Stabilization of z/VM support for the IBM z15 family

- z/VM 7.4 is planned to be the last z/VM release to support the z15 family of servers, which includes IBM LinuxONE III. An IBM z16 family server, which includes IBM LinuxONE 4, will be the required minimum level for future z/VM releases.

z/VM 7.4 – Statement of Direction

Full-part replacement

- IBM intends to change how z/VM service is delivered in a **future** z/VM release.
- Instead of CMS update files, full-part-replacement files will be provided. In addition, full-part-replacement files will no longer contain sequence numbers, which are character line identifiers in the last 8 characters of every line in a fixed record file.
- z/VM source files will be encoded using the CP1047 code page, unless stated otherwise.
- Tooling will be provided to assist clients or ISVs who still have a need to update z/VM source files.

z/VM z17 Support

z17 Support

- **Please check the z/VM z17 page for current information:**
<https://www.ibm.com/support/pages/zvm/service/vmreqz17.html>
- There are source code recompile requirements specific to users of the HCPVINOP MACRO and vendor products that use the macro.
- For z/VM 7.3, any users of the HCPVINOP MACRO are required to recompile their local updates before using this service if the PTF for APAR VM66823 is installed.
- For z/VM 7.4, any users of the HCPVINOP MACRO are required to recompile their local updates before using this service if the PTF for APAR VM66824 is installed, which is included in z/VM 7.4 CP Feature Pack 02 Fix Pack 00 or higher.
- **For users of vendor products, please contact the vendor to inquire whether they use the HCPVINOP macro. If so, obtain recompiled source from the vendor.**

z17 Support

- **Guest enablement of the following facilities**

- Vector-Enhancements Facility 3
- Vector-Packed-Decimal-Enhancement 3
- Workload-Instrumentation
- Message-Security-Assist Extensions
- Perform Lock Operation (PLO)
- Concurrent-Functions

- **Host support for the following facilities**

- CPU Measurement Facility (CPU-MF)
- Data Processing Unit (DPU)

- **Real device support**

- Enhanced QDIO (OSH) devices
- Network Express Hybrid (NETH) devices

z17 Networking

Significant changes to networking hardware with the z17

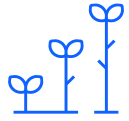
- Network Express adapter is the IBM z17 converged hardware for OSA, RoCE and Coupling Express3 Long Reach
- Significant throughput improvement, especially for 25Gbit cards
- Linux on Z only supporting RoCE function, still supporting QDIO vSwitch vNICs
- Migration of Layer 2 vSwitches should go seamless
- Migration of Layer 3 vSwitches will require a change on z/VM and the virtual machines

z17 Networking

Shipped support in 3Q2025

- EQDIO vNIC support of z/VM vSwitches
- Multi-VSwitch Link Aggregation for EQDIO Interfaces

Development Focus



Scalability

The capacity of a system to handle a growing amount of work or to utilize a growing number of resources.



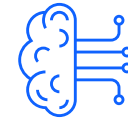
Usability

The extent to which a product can be used by specified users to achieve specified goals with effectiveness, efficiency and satisfaction



Resiliency

The ability of a system to continue to operate under adverse conditions or stress, even if in a degraded or debilitated state, while maintaining essential operational capabilities.



Hardware Support

The capability of an operating system or application to fully utilize the hardware of the system it is being executed on.

Other Highlights

Infrastructure Suite for z/VM and Linux V2.2 (5698-K01)

OMEGAMON XE on z/VM and Linux

Performance monitoring of z/VM and Linux guests

Integration with ITM on distributed platforms and other OMEGAMONs on z/OS

Operations Manager for z/VM

Operational monitoring (consoles, current state of service machines, network connections, etc.)

Automated operations

Take actions based on events or messages

Backup and Restore Manager for z/VM

Image and file level backup and recovery of z/VM

Image level backup and recovery of Linux

Storage Protect

File level backup and recovery for Linux Virtual Machines

No limit on number of clients or servers: price is based on number of IFLs or general purpose processors

Tape Manager for z/VM (*optional priced feature*)

Manage tape volumes and devices for backup/recovery
Supports real and virtual tape: IBM, StorageTek, EMC,

Luminex

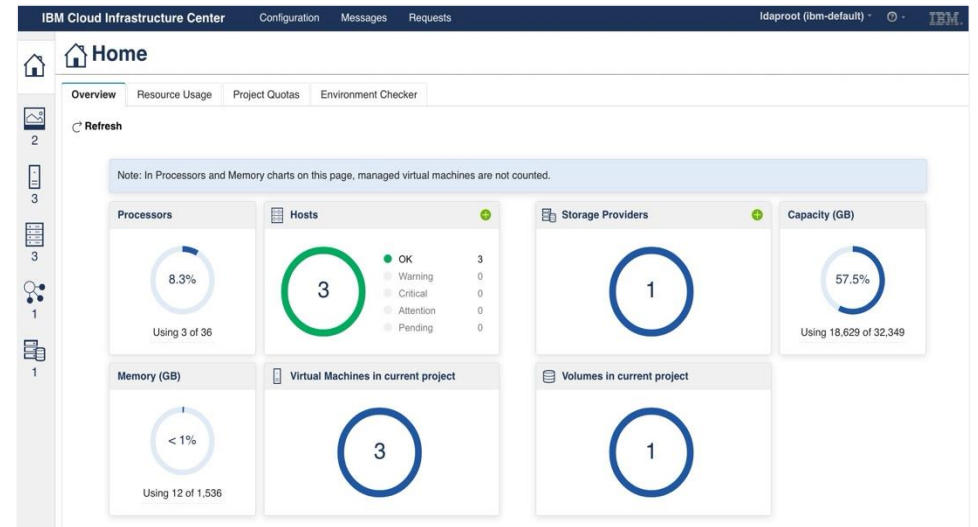
© 2026 IBM Corporation

IBM Cloud Infrastructure Center

Scalable IaaS management for containerized and non-containerized workloads across the enterprise

<p>Infrastructure management</p> <p>Instantiate, define, capture, and manage the lifecycle of virtual machines</p>	<p>Automation</p> <p>Build 'services' for automated infrastructure management</p>	<p>Cloud integration</p> <p>Integrate via compatible OpenStack APIs with cloud management tools</p>
---	--	--

Use cases			
Simplified experience with virtualization	DB-as-a-service on-premises deployment	IaaS management for service providers	Deployment of Red Hat OpenShift clusters
Simplified standard operations	Automated deployment of instances	Vendor-agnostic	Streamlined automation and life-cycle mgmt.

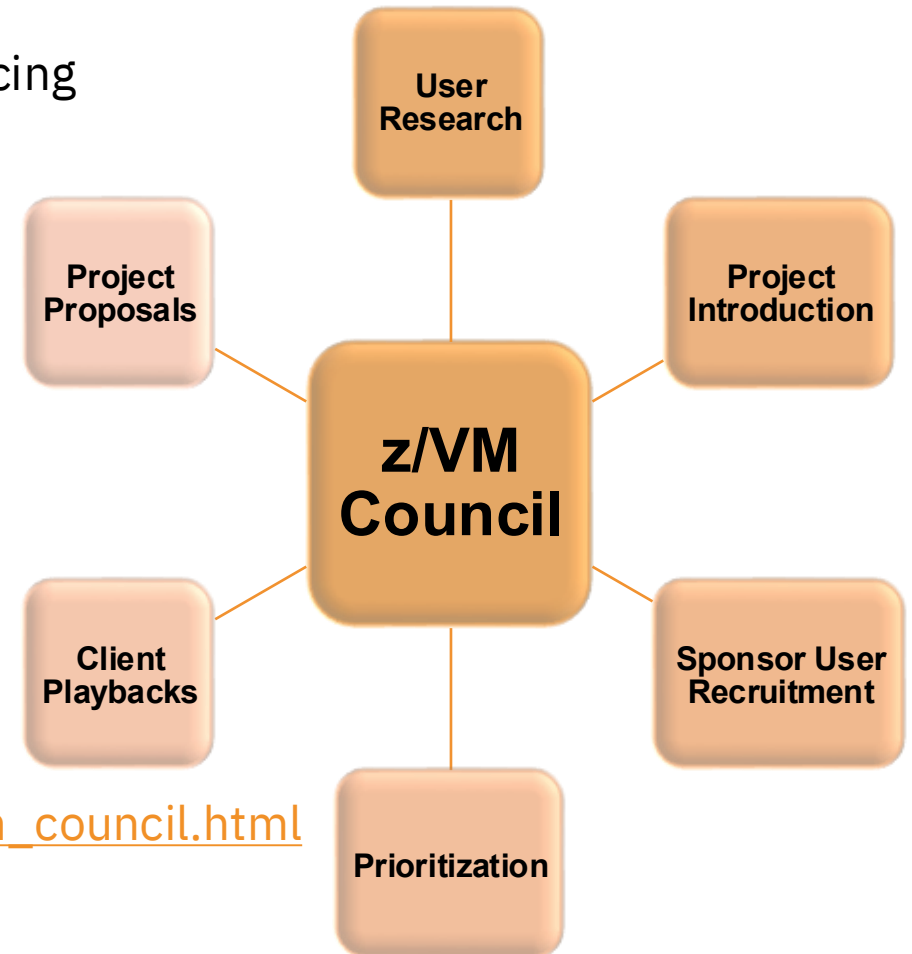


Learn more

- Watch [IBM Cloud Infrastructure Center webpage](#)
- Read the [technical blogs and announcements](#)
- Check out the [technical details at the IBM Documentation](#)
- Get started using the [Content solution](#)
- Request a demo from your IBM or BP representative
- Contact: 'Janet' Jia Wu, PM: wujia@cn.ibm.com

z/VM Council – Client Communication and Collaboration

- z/VM-centric community started in June 2018
 - Meeting about once a month via telephone and web conferencing
 - Other collaboration done via membership web site
- Membership Requirements
 - IBM Z Feedback Program Agreement (FPA)
 - Regular participation
 - Sponsor User for at least one project per year
 - Homework assignments
- Additional details:
 - more information
https://www.ibm.com/support/pages/zvm/sponsor_user/zvm_council.html
 - Link to z/VM community - <https://ibm.biz/zvmCouncil>
 - Contact: Kerry Wilson – kerryw@us.ibm.com



z/VM Education Pages

- <https://www.ibm.com/support/pages/zvm/education/>
- Easily prioritize the education that matches your need and skill level.
- New videos added regularly

z/VM education roadmap coverage

Reference the table below to find which videos are contained on the various z/VM education roadmaps.

Video Name	z/VM Basic Education Roadmap	New z/VM System Programmer Roadmap	z/VM Advanced Education Roadmap
100 - What is z/VM?	✓	✓	✗
101 - z/VM Virtualization Basics	✓	✓	✗
102 - CP and CMS Customization	✓	✓	✗
103 - Twelve Pillars of System Management	✓	✓	✗
104 - Introduction to System Administration	✓	✓	✗
105 - Introduction to CMS Pipelines	✓	✓	✗
106 - Introduction to RACF	✓	✓	✗
200 - Rexx Coding Techniques - Part 1	✗	✓	✗
201 - Rexx Coding Techniques - Part 2	✗	✓	✗
202 - Problem Determination	✗	✓	✗
203 - z/VM Virtual Switch (VSwitch): The Basics	✗	✓	✗
204 - z/VM Introduction to the Directory Maintenance (DirMaint)	✗	✓	✗
300 - What's Going Wrong? LPAR Weights	✗	✓	✓
301 - z/VM Virtual Switch (VSwitch): Advanced Topics	✗	✓	✓

z/VM Education Pages

- <https://www.ibm.com/support/pages/zvm/education/>
- View video's right from our education webpage or go directly to YouTube to watch and subscribe.

Basic z/VM Knowledge Roadmap

This track assumes you have little or no experience with the IBM mainframe, and your role will only require a basic knowledge of the product. The courses in this roadmap will touch on the basics, but will not include some of the more technical courses intended for z/VM System Programmers.

Examples of this role may include: *Architect, Sales, Manager, General Operator*

+ **Session 100 - What is z/VM?**

+ **Session 101 - z/VM Virtualization Basics**

+ **Session 102 - CP and CMS Customization**

+ **Session 103 - Twelve Pillars of System Management**

+ **Session 104 - Introduction to System Administration**

+ **Session 105 - Introduction to CMS Pipelines**

+ **Session 106 - Introduction to RACF**

 [Youtube: Basic z/VM Knowledge Roadmap playlist](#)

z/VM Education – How To Guides

- Short videos that provide guides on different z/VM related tasks.
- Part of the IBM Support and Training YouTube channel.
- Playlist - <https://ibm.biz/zvmhowto-yt>
- Please like and subscribe

- 6 **z/VM Education: How to Customize Your Logon Screen**
IBM Helps • 1K views • 1 year ago
- 7 **z/VM Education: How to Dynamically Add a Paging Volume**
IBM Helps • 362 views • 1 year ago
- 8 **z/VM Education: How to Enable RACF**
IBM Helps • 688 views • 1 year ago
- 9 **z/VM Education: How to Customize RACF**
IBM Helps • 663 views • 1 year ago
- 10 **z/VM Education: How to Change Your System Name**
IBM Helps • 268 views • 1 year ago
- 11 **z/VM Education: How to Use GETSHOPZ**
IBM Helps • 152 views • 7 months ago
- 12 **z/VM Education: How to Process a CP Dump Using DUMPLD2**
IBM Helps • 57 views • 2 weeks ago

Problem Determination - Must Gather Information

- <https://www.ibm.com/support/pages/zvm/support/>

z/VM Troubleshooting

Overview
Preparation
Troubleshooting
Must Gather
Sending Data

z/VM

News

About z/VM

Events calendar

Products and features

Downloads

Technical resources

Library

How to buy

Last Updated: 17 February 2021

This page provides a summary of materials for you to collect when you have a problem with your z/VM system. For more details, select the problem you are troubleshooting, and follow the instructions. Data that needs to be collected and sent to IBM is highlighted in the table below. If there is "data to collect" for your problem, refer to the "[Must Gather - Details](#)" section for details on how to collect the data.

Filter:

#	Category	Problem Description	Actions / Data to Collect
13.	Performance	z/VM system performance problems	z/VM Support may request the data below. Note: This data should be collected from time periods in which the system was performing well, as well as from time periods in which the system was running poorly: <ul style="list-style-type: none"> Collect and send MONWRITE data to IBM Collect and send CP OPERATOR's console to IBM

Open Mainframe Project – Project Feilong

Project Mission:

Contribute and further develop the RESTful API server that simplifies interaction with the IBM z/VM Hypervisor

Community Benefits:

- Have a strong codebase to use, contribute, and further develop thanks to the IBM contributions to the project
- The RESTful API server makes using z/VM easier especially for developers without deep knowledge of z/VM
- Enable development of self-service Infrastructure-as-a-Service automation of z/VM Guests, networking, and storage used by z/VM.

For more information: <https://www.openmainframeproject.org/all-projects/feilong>

Open Source – Ansible for z/VM

Project Mission:

Provide a set of ansible modules, roles, and playbooks for managing z/VM via SMAPI and zthin.

Requirements

- z/VM SMAPI
- Directory Manager
- ICIC Compute node or Feilong zthin installed on virtual machine running Linux on Z

For more information: https://github.com/IBM/zvm_ansible

Summary

Summary

- z/VM 7.5 has been preview announced!

- z/VM 7.4 has released in 3Q24!
 - Includes all Continuous Delivery enhancements shipped as service in z/VM 7.3
 - New Linear Service Model

- New function will continue to be delivered with the Continuous Delivery model
 - Heavy dependence on the sponsor user program
 - Plans for new function are published on the z/VM website
 - <https://www.ibm.com/support/pages/zvm/newfunction/>

- The z/VM website has been migrated to a new hosting platform, please re-register for any notification!

